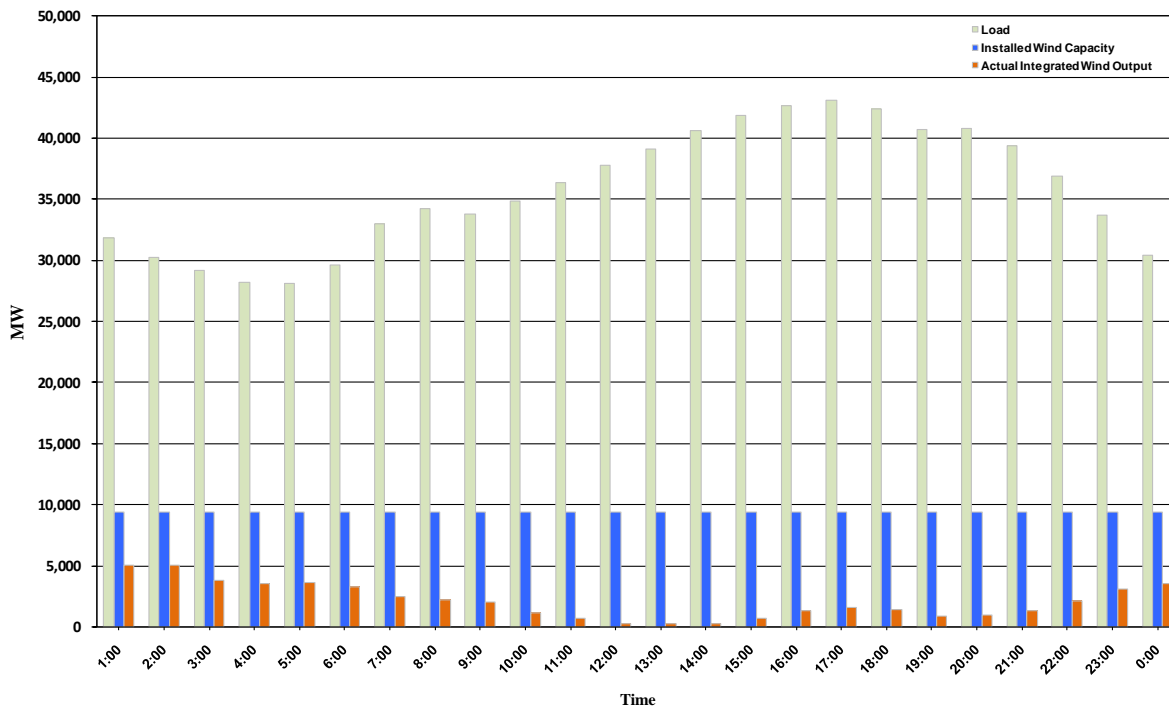




ERCOT Grid Operations Wind Integration Report: 10/26/10

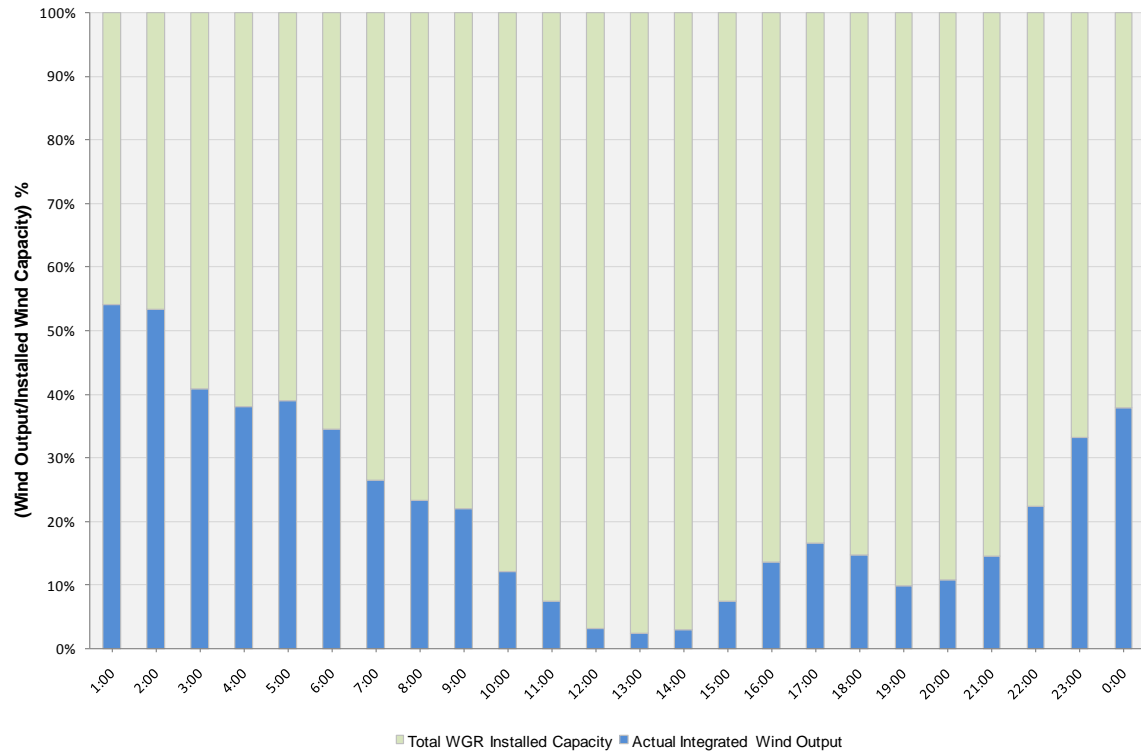
Peak Load	43,134 MW
Load Peak Hour	17
Wind Record 06/12/10	7016 MW
Max Wind value	5446 MW
Wind Peak Hour	01:04:08
Wind Integration %	17.65

Hourly Average Actual Load vs. Actual Wind Output
10-26-2010

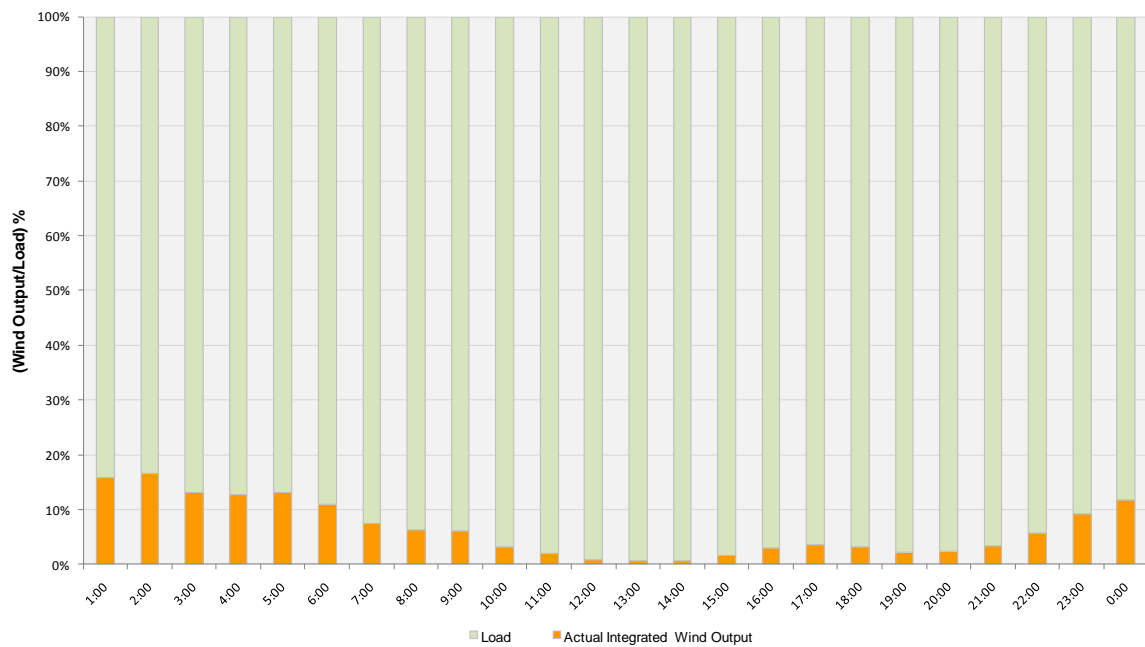




Actual Wind Output as a Percentage of the Total Installed Wind Capacity
10-26-2010



Actual Wind Output as a Percentage of the ERCOT Load
10-26-2010





ERCOT Load vs. Actual Wind Output 10/19/10 - 10/26/10

